

Florence Park Community Centre

Cornwallis Road, Oxford, OX4 3NH; Registered Charity No: 1159506

Tel: 07864 028591; www.florenceparkcommunitycentre.org.uk

Room Hire Prices

(See flow chart on next page to see if you pay local, associate or commercial rate.)

Main Hall (capacity 100) - Prices per hour

	Before 7pm Weekend Only	After 7pm
LOCAL RATE	£10	£12
ASSOCIATE RATE	£15	£18
COMMERCIAL RATE	£20	£25

Lounge Room (capacity 30) - Prices per hour

	Before 7pm Any day	After 7pm
LOCAL RATE	£7	£9
ASSOCIATE RATE	£10	£12
COMMERCIAL RATE	£15	£18

Other useful info...

Use of Kitchen: Use of the kitchen costs £10 for the duration of the hire. If use of the cooker is required, add an extra £5. Preparation of food must comply with food hygiene regulations.

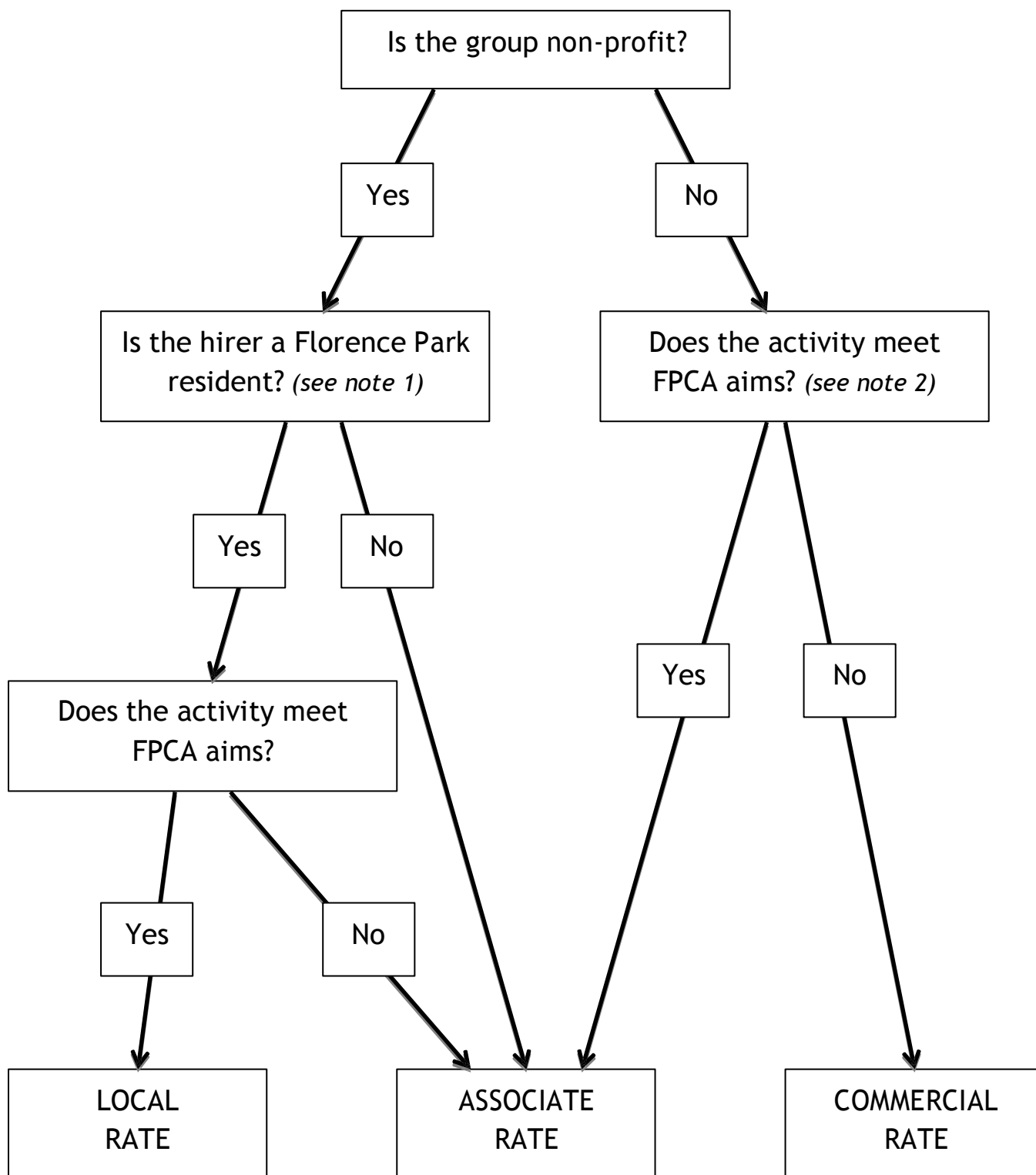
Deposit: A deposit is required for one-off events. £50. The deposit will be returned in full after the event (unless required for cleaning or damage repair).

Bar Staff: If you require the bar for your hire, the evening hire price includes the services of one barman. If you have over 50 guests, an additional barman will be required so please let me know. Bar staff can be requested for daytime weekend events after midday.

Membership: Anyone can apply to join the Centre as a member - see the notice board for details and reasonable costs - or visit www.florenceparkcommunitycentre.org.uk

Security Costs: Where deemed necessary by the committee, parties on weekend evenings will have an additional charge of £25 for 2 hours of security between 10pm-midnight.

Florence Park Community Centre - Room hire charges flow chart



Note 1: Florence Park area as outlined below and in the constitution on the website - www.florenceparkcommunitycentre.org.uk.

Note 2: The Centre's aims are to provide facilities for recreation and leisure for the social or educational benefit of Florence Park's residents.

Local Area Outline

Any houses that fall within this area are charged at the 'Local' tariff, all others are either 'Associate' or 'Commercial'



Cancellation Policy:

- . Once the deposit has been paid if you cancel at any time £10 will be withheld.
- . If you cancel 3 weeks in advance of the booking £20 will be withheld.
- . Two weeks in advance of the booking £25 will be withheld.
- . One week (& therefore after the hall cost has been paid) £30 or 50% of the hall hire cost – whichever is the greater.

These charges apply to all evening (after 7pm) or weekend (Friday, Saturday & Sunday any time) bookings.